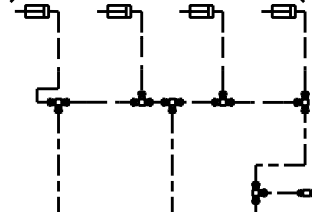


ACTIVE COLOR	CIRCUIT
→ → → RED	SECONDARY
→ → → GREEN	PRIMARY & SUPPLY
→ → → YELLOW	PARKING BRAKE
→ → → BLUE	SUSPENSION
→ → → BLACK	ACCESSORIES

DOOR AIR LOCK FOR LUGGAGE COMPARTMENT



DOOR AIR LOCK FOR LUGGAGE COMPARTMENT

NOTE #1 : OPTION OUTPUT RETARDER ON TRANSMISSION.
 *2 : N.C. = NORMALY CLOSE
 N.O. = NORMALY OPEN